

More convenient transportation and  
comfortable living.

Level 4 Automated Driving Mobility Service

ZEN  drive



## About ZEN Drive

### An automated driving mobility service that supports people's lives

This automated driving vehicle operates between Araya and Shihi on the Eihiji Mai-road, a town road that utilizes an abandoned railway. Perfect for getting around in your daily life! It can also be used for events with many participants, such as children's parties and salon activities. Through this mobility service, we assist you in living a comfortable and rich life.



## How to use ZEN drive

Using ZEN drive is **simple!**

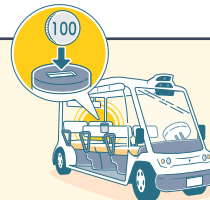
STEP  
**01**

It departs at fixed times, so please wait outside the red painted area.  
(No reservation required)



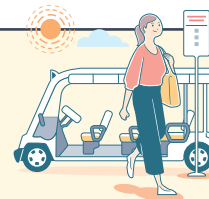
STEP  
**02**

Pay the fee by placing it in the fare box as shown in the right-hand illustration.



STEP  
**03**

When you arrive at your destination, be careful as you get off.



\*There may be times when service is unavailable without notice due to weather conditions.

\*Please be careful when using the ZEN drive service.

\*Cart capacity is 7 passengers. If capacity is reached, you may not be able to get on your desired ride.

# Automated Driving Levels

## First **Level 4** automated driving operation in Japan

We began conducting validation tests for realizing an automated driving mobility service in 2021. On March 30, 2023, we received approval for automated operation equipment (Level 4), which does not require human drivers, for vehicles to be used in Eihei Town in Fukui Prefecture. These vehicles are the first of their kind used in Japan. We then launched our mobility service with Level 4 automated driving on May 28, 2023.

### Level 1

Partial automation of either acceleration and break operation, or steering wheel operation

### Level 2

Partial automation of both acceleration and break operation, and steering wheel operation

### Level 3

In a limited area that meets specific driving environment conditions, automatic driving equipment is able to work as an alternative in all driving operations\*.

\*However, in cases in which there is a risk of the automated driving equipment not normally working during operation, an alarm goes off that urges someone to drive the vehicle, so appropriate action must be taken.

ZEN-drive is now at this level!

### Level 4



In a limited area that meets specific driving environment conditions, automatic driving equipment is able to work as an alternative in all driving operations.

#### What are specific driving environment conditions...?

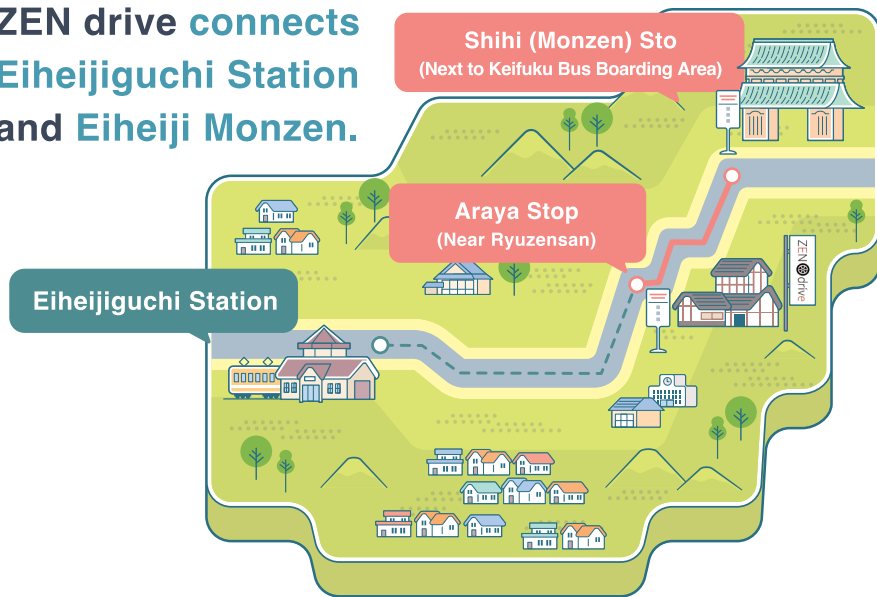
These are conditions in which automated driving is possible, including location (such as only on highways), weather (such as only on clear days), and speed. These conditions differ depending on system performance.

### Level 5

Automatic driving equipment is able to work as an alternative in all driving operations.

## ZEN drive Operating Area

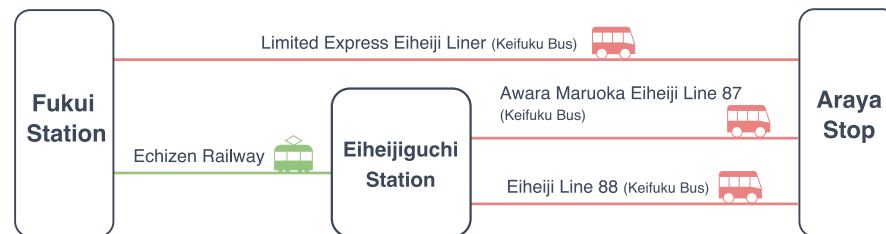
ZEN drive connects  
Eiheijiguchi Station  
and Eiheiji Monzen.



### Japan's 1st driverless (Level 4) Automated Driving Service

The vehicle location, operation speed, and internal and external conditions for the Level 4 automated driving area are all monitored and operated in the Araya Remote Room.

## How to Access the Araya Stop



Transfers are OK too! For details, please scan the QR Code!

### Regular Bus Timetable

Echizen Railway  
Connects at  
Eiheijiguchi Station



### Eiheiji Liner Timetable

Keifuku Bus  
(Eiheiji Liner)  
Transfer  
Dansuke  
Honten-mae Bus  
Stop



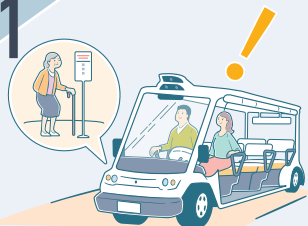
### For those coming by car

You can park at the Dansuke parking lot for free, but there are limited parking slots available. There are times you may not be able to park due to full capacity. Please refrain from inquiring to Dansuke regarding parking and automated driving operations.

Machizukuri ZEN Connect Inc. TEL: 0776-63-3900

## Caution Points for Passengers

01



The vehicle senses people and obstructions, so it automatically adjusts its speed and stops.

02



Please do not take dangerous actions such as suddenly rushing out in the path or intentionally standing in front of the vehicle.

03



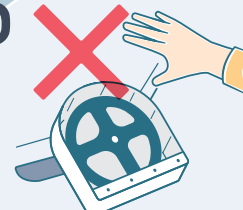
The vehicle senses trees around it, and may slow down or stop.

04



Small children who board the vehicle should be accompanied by a guardian so they can safely use this service.

05



Please do not carelessly touch the steering wheel and other machinery.

06



Please do not take dangerous actions such as jumping out of the vehicle or placing your hands or feet outside the vehicle.

07



The vehicle body may shake so please hold on to the handrails to ensure a safe and enjoyable experience.

08



Please follow the in-vehicle announcements.

The in-vehicle status and audio is confirmed in the Remote Control Room. If anything happens, please report it using the microphone in the front of the vehicle.



Follow these precautions for a pleasant ride!

## Recommended Tourist Spots

SPOT 01

### Daihonzan-Eiheiji

5-15 Shihi, Eiheiji-cho, Yoshida-gun, Fukui Prefecture



A Zen training dojo opened by famous Buddhist priest Dogen Zenshi. The grounds located deep in the mountains are lined with more than 70 shrines and towers

SPOT 02

### Old Approach to Eiheiji

Shihi, Eiheiji-cho



Restored based on old maps from the 1600s. A silent, atmospheric old path where you can experience the spirit of Zen.

SPOT 03

### Mt. Atagoyama

Shihi, Eiheiji-cho



This mountain has an altitude of around 360m. Atago Kannon Temple is located on the peak, where you can get a complete view of Eiheiji.

SPOT 04

### Shiki no Mori Complex

9-1-2 Yama, Eiheiji-cho, Yoshida-gun, Fukui Prefecture



This facility, which features a teleworking space along with an old pine umbrella pavilion with a hall with pictures on the ceiling, is perfect for a 'workation'.

# Operation Schedule

**Operating Days**      Saturday, Sunday, and National Holidays  
(\*Does not run on weekdays)

**Operating Area**      Between Araya and Shihi (Eiheiji Monzen)  
Around 2km [Around 10 min.]

**Fare**                      Adults 100 JPY  
Middle school students and younger 50 JPY  
(Free for preschool-aged children)



## Operating Times

Time	Inbound			Outbound		
	Araya (Mountainside) → Shihi			Shihi → Araya (Mountainside)		
10AM	00	20	40	00	20	40
11AM	00	20	40	00	20	40
12AM						
1PM	00	20	40	00	20	40
2PM	00	20	40	00	20	40
3PM	00			00		